

Aladin

There are currently two recommended links for Aladin.

- Suitable for most users, the default Aladin link is:
<http://aladin.dev.jhu.edu>
- For users that would like a larger view for easier visibility, use the Aladin-Large link:
https://aladin.dev.jhu.edu/forms/frmservlet?config=aladin_large

The only software prerequisite needed for Aladin to run is a current version of **Java**, available at <http://java.com>. The current compatible version is Java 7 Update 55, and updates are released fairly often.

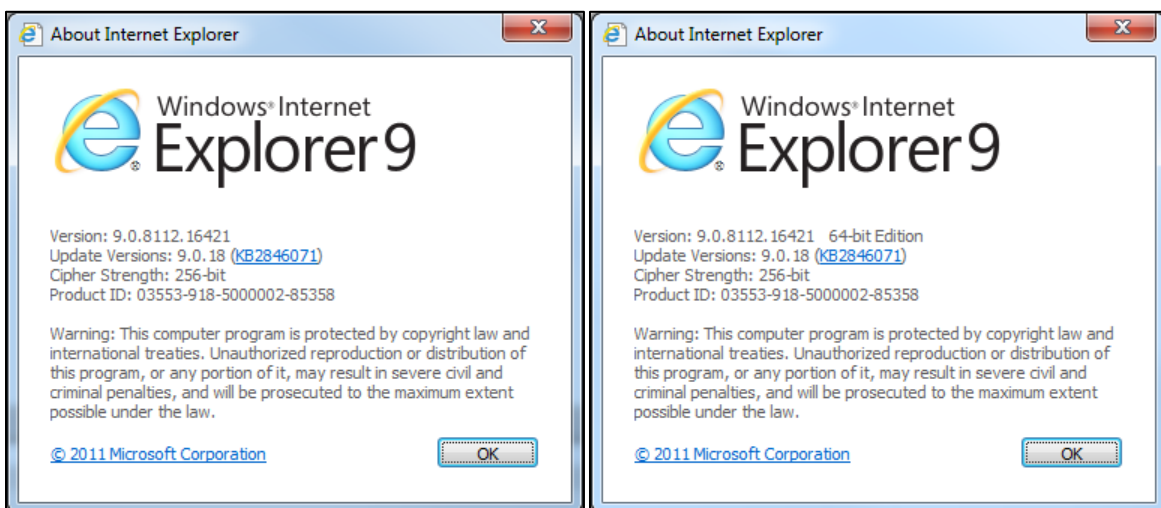
Important note: Every time Java is reinstalled or updated, the next-generation Java Plug-in setting will go back to being checked. Be sure to uncheck it as shown on page three of this guide

If your system needs Java software to be installed or updated and you are in Suite N2100 in Keswick or the San Martin Center location, please submit a DARSupport Service Request. If you are in any other building, please contact your desktop support team for assistance and feel free to share this document with them.

The only fully approved web browser for use with Aladin is **Internet Explorer**. While other browsers may work for some parts of Aladin, only Internet Explorer is fully supported at this time.

Important note: Systems running Windows 7 64-bit will have two versions of Internet Explorer, 32-bit and 64-bit. It is important to install the 32-bit version of Java, and to use the 32-bit version of Internet Explorer. The running version can be viewed in the About Internet Explorer window.

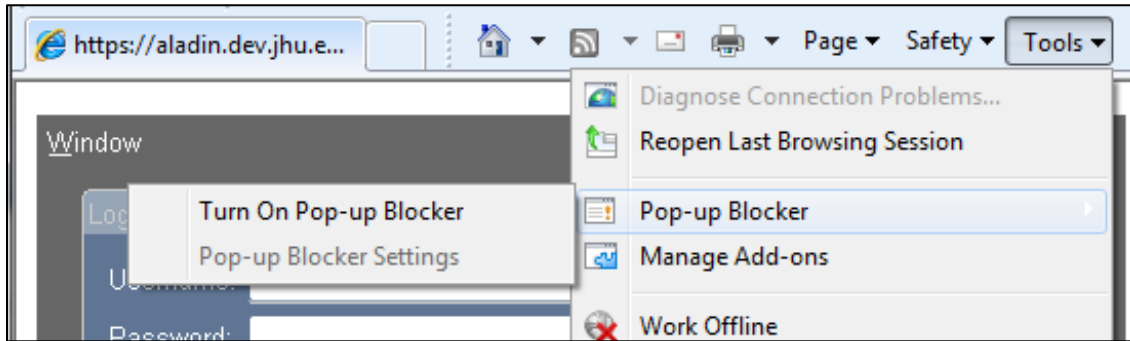
In the screenshots below, the 32-bit version is on the left, and the 64-bit version is on the right:



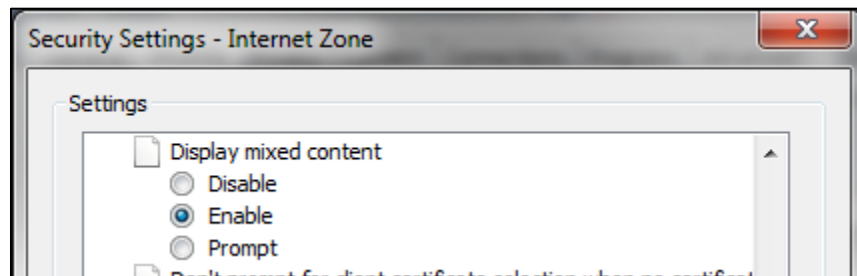
Aladin – Internet Explorer Settings

There are three configuration settings that should be verified in **Internet Explorer**.

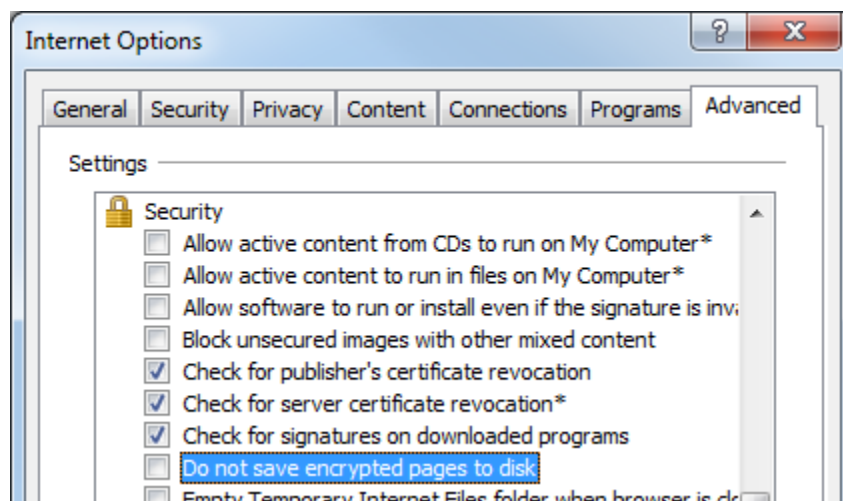
- Turn Off the Pop-up Blocker – In the **Tools** menu, hover over the **Pop-up Blocker** submenu and verify that the setting appears as **Turn On Pop-up Blocker**. If it shows as **Turn Off Pop-up Blocker** then click the setting to apply the change.



- Enable Mixed Content – Also in the IE Tools menu, click **Internet Options**. Select the Security tab, and click once on the Internet zone to select it. In the Internet zone settings, click the **Custom level...** button. Scroll about halfway down to the **Miscellaneous** section and look for the setting titled **Display mixed content**. This setting should be set to **Enable**



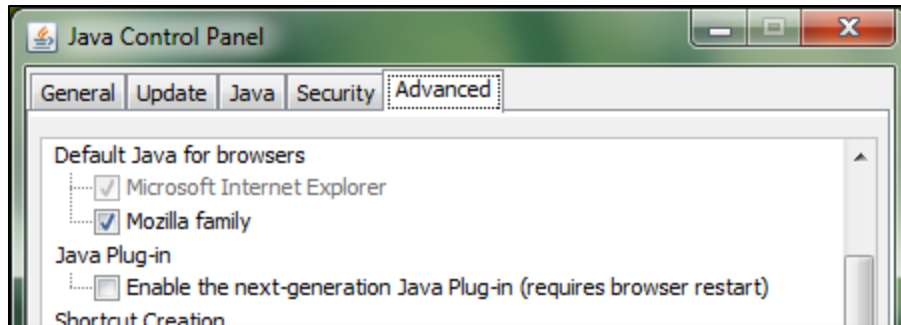
- Do Not Save Encrypted Pages To Disk – Also in the IE Tools menu, click **Internet Options**. Select the Advanced tab. Scroll about $\frac{3}{4}$ of the way down to the **Security** section and look for the setting titled **Do Not Save Encrypted Pages to Disk**. This setting should be **unchecked**.



Aladin – Java Settings

There are four settings that need to be verified in the **Java control panel**.

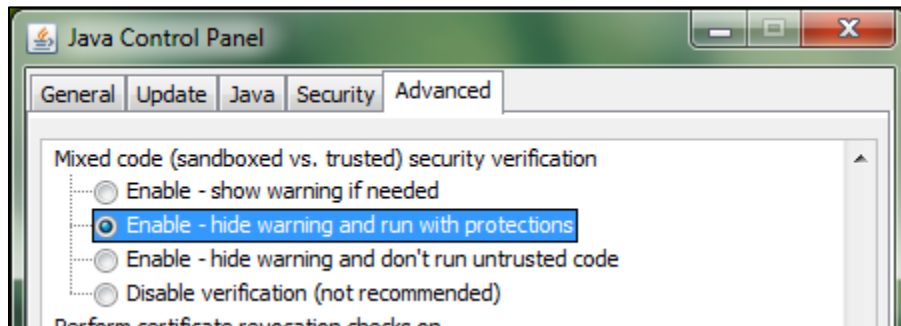
- **Disable the next generation Java Plug-in** – Open the Java Control Panel and select the **Advanced** tab. In the **Java Plug-in** setting uncheck the box marked **Enable the next-generation Java Plug-in**



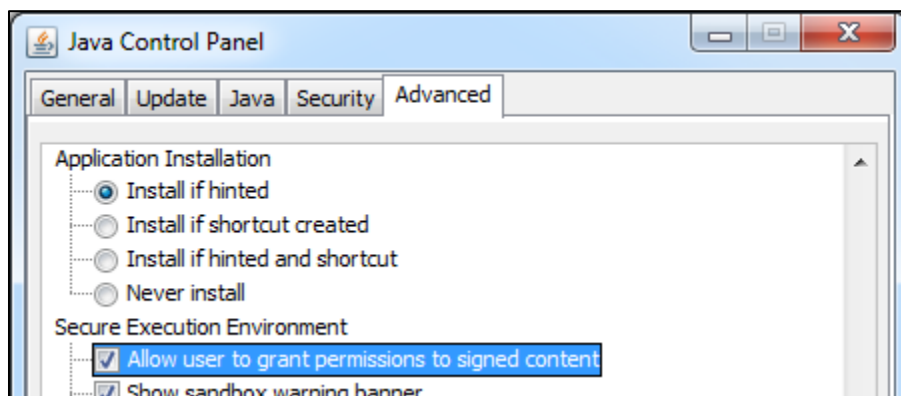
Important note:

Every time Java is reinstalled or updated, the next-generation Java Plug-in setting will go back to being checked. Be sure to uncheck it again each time Java is installed or updated.

- **Enable Mixed Code** – In the same Java Control Panel, in the **Mixed code** section, select the setting marked **Enable – hide warning and run with protections**

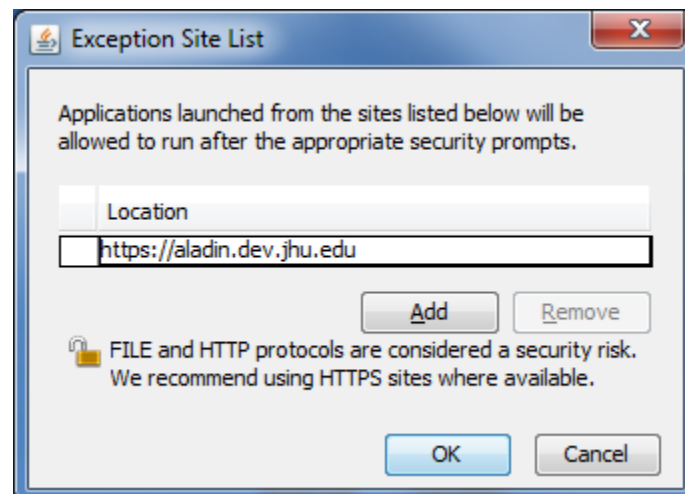
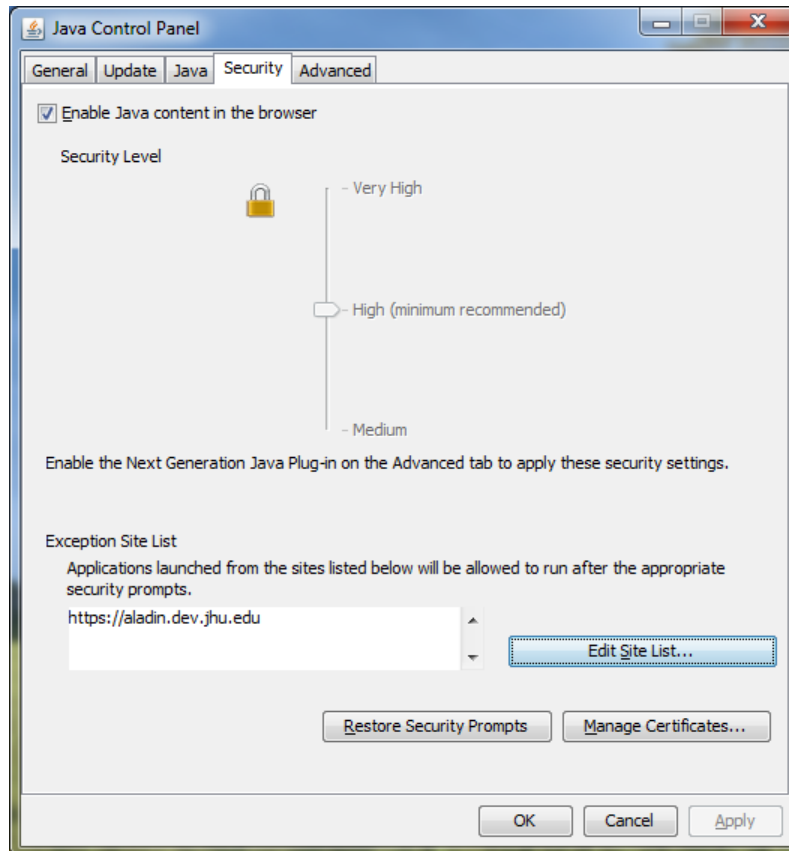


- **Allow User to Grant Permissions to Signed Content** – In the same Java Control Panel, in the **Secure Execution Environment** section, check the setting marked **Allow User to Grant Permissions to Signed Content**



Aladin – Java Settings

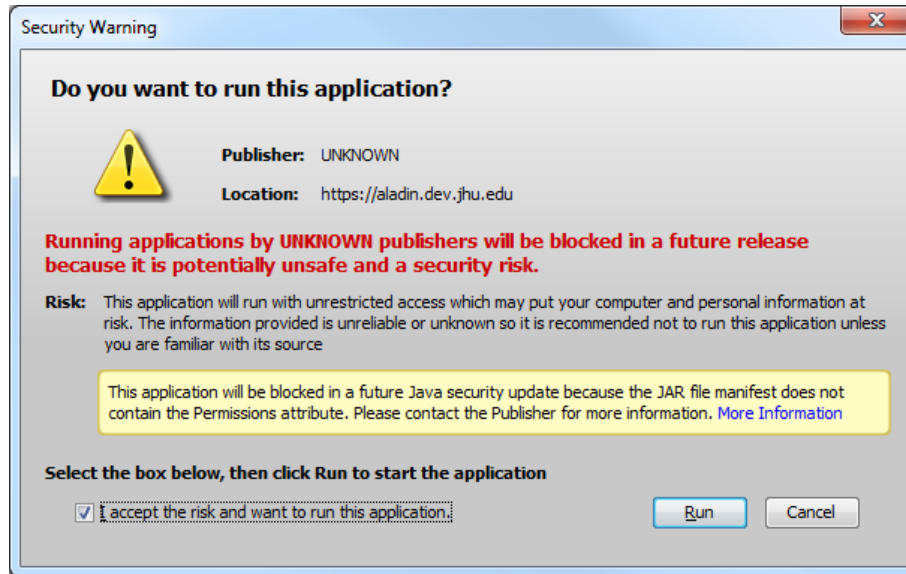
- **Add Aladin to the Java Exception Site List** – In the Java Control Panel Security tab, click the **Edit Site List...** button, then click **Add**, and enter <https://aladin.dev.jhu.edu> in the location bar



Aladin – First Launch

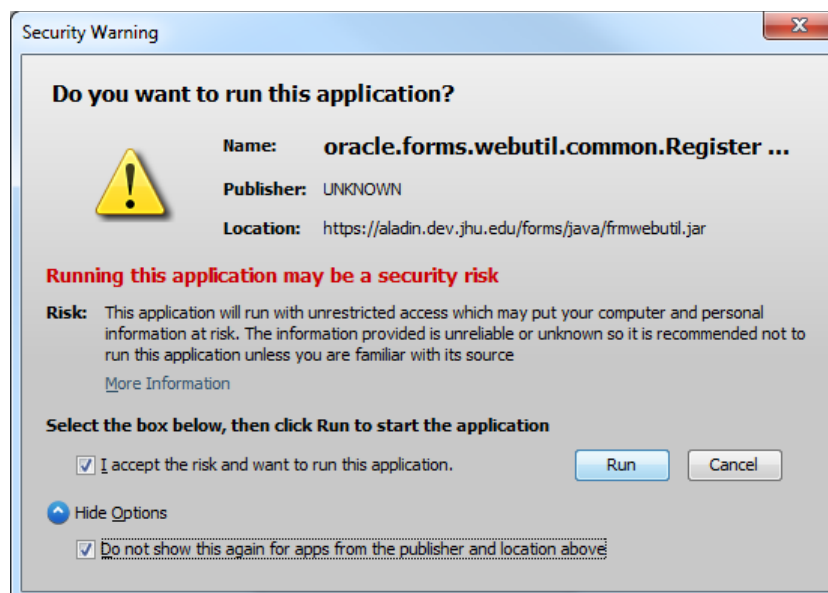
If you have Java 7 Update 45, and have set all settings correctly, you will still see a Security Warning message as shown. You must check the box marked **I accept the risk and want to run this application**. Then select **Run**

This message will appear every time you launch Aladin



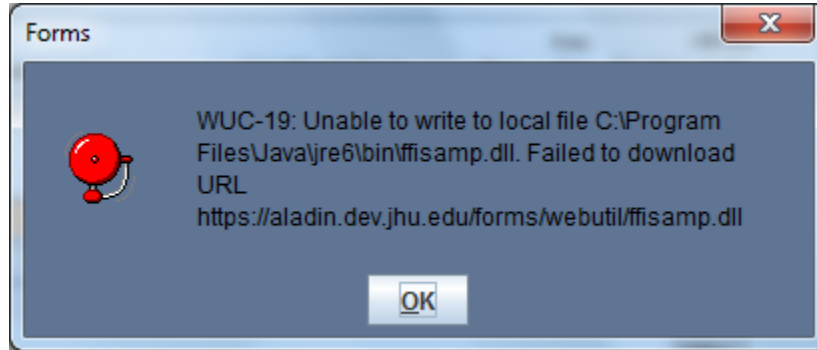
You may see an additional screen that should only appear the first time you enter Aladin, if you follow the steps as shown.

If you see a **Security Warning** window as shown, follow these steps. First, click the arrow in the blue sphere marked **Show Options** to reveal all of the checkboxes. Second, be sure to check both the box marked **I accept the risk and want to run this application** and the box marked **Do not show this again for apps from the publisher and location above** before choosing **Run** on the window.



Aladin – Windows 7 Addendum

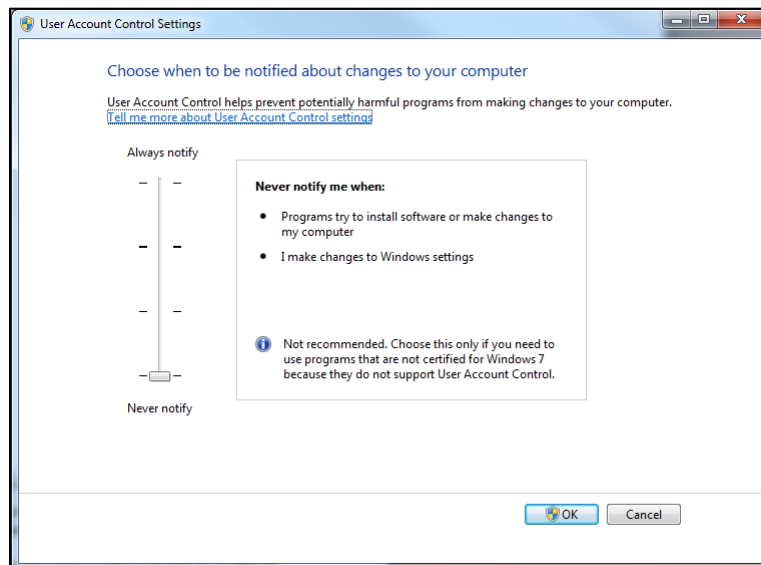
For Windows 7 Users – You may be presented with several **Forms** messages when you are navigating within Aladin’s Relationship Management screens.



There are different methods available in order to eliminate these messages.

If you are an administrator of the computer that you are using to access Aladin

- Open the User Account Control settings in the Control Panel
- Set the slider control to the bottom setting, **Never Notify**

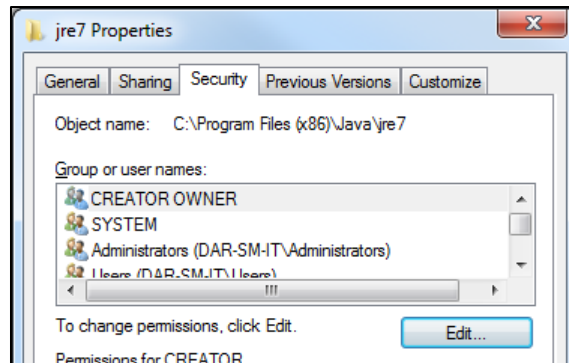


- Restart the system as prompted

Aladin – Windows 7 Addendum

If you are not an administrator of the computer that you are using to access Aladin

- Contact your desktop support group and ask them to perform the following steps
- Browse to the C:\Program Files (x86)\Java folder (For a 64 bit system) or the C:\Program Files\Java folder (For a 32 bit system)
- Right-Click the **jre6** or **jre7** folder and select Properties in the menu



- Select the Security tab in the **jre Properties** window
- Choose the **Edit...** button
- Select the **Users** group in the **Group or user names:** section
- In the **Permissions for Users** section, check the box in the **Modify** row and **Allow** column

